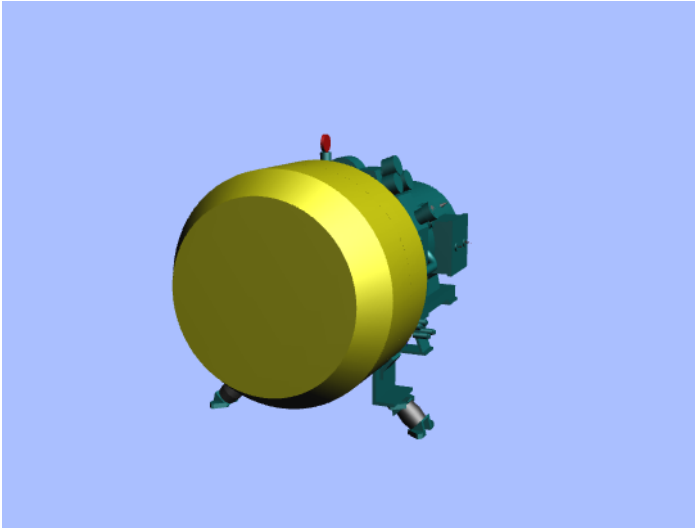


## Compressor type

### L50, L80II



#### Structural features:

*L50:* Two staged cylinders in W-arrangement with one-throw crankshaft, single acting trunk pistons

*L80II:* Two staged, opposed cylinder type with four-throw crankshaft, single acting trunk pistons

*1st stage:* 2 cylinders (L50), 3 cylinders (L80II)

*2nd stage:* 1 cylinder

#### Valves:

Combined suction and pressure valves in both stages

#### Air cooling:

By axial fan directly driven by the crankshaft

#### Intercooler and aftercooler:

Finned pipes

#### Force feed lubrication:

Gear pump driven by the crankshaft by means of gear wheel  
Oil pressure control by means of pressure gauge and pressure switch

Oil level inspection glass

Crankcase venting from oil filler to air suction filter

#### Bearings:

*Crankshaft:* Slide bearings

*Connecting rod:* Slide bearings

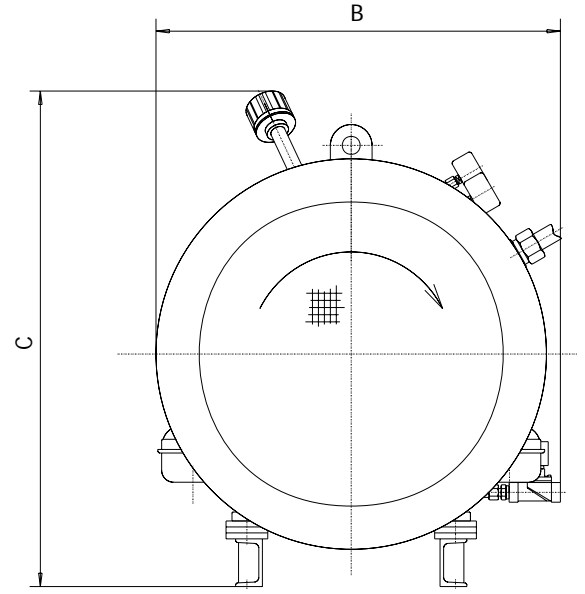
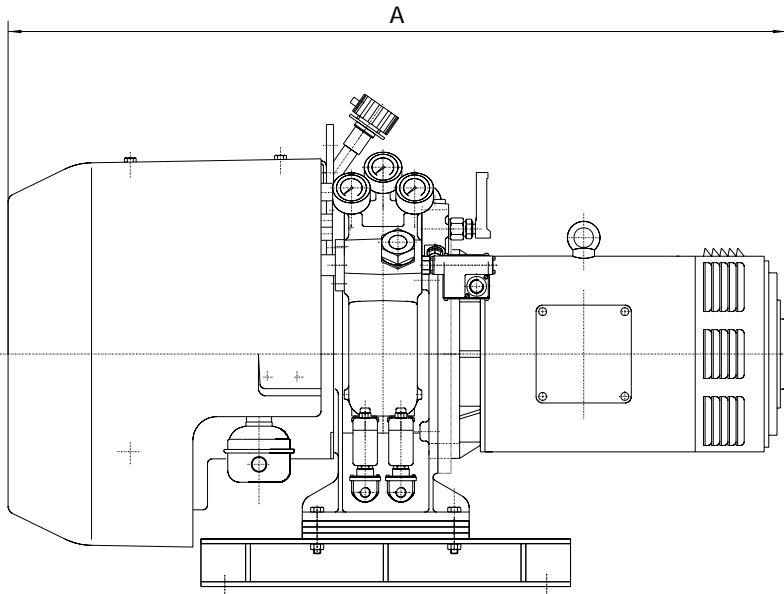
*Wrist pin 1st stage:* Slide bearing

*Wrist pin 2nd stage:* Needle bearing

# Compressor type

## L50, L80II

# HATLAPA



TYPE	Cylinders	Stages	Speed	F.A.D.	Power	Weight incl. e-motor approx. kg	Dimensions		
			r.p.m.	m <sup>3</sup> /h	kW		A	B	C
L50	3	2	1150	37.5	8	310	1210	650	825
			1450	48.5	10.3	300	1210	650	825
			1750	59	12.5	300	1210	650	825
L80II	4	2	1150	57.5	12	330	1270	655	775
			1450	72.5	15.5	380	1300	655	775
			1750	85.5	19	380	1300	655	775

All data apply to a final pressure of 30 bar. The right for alteration of specification and data to incorporate improvements in design is reserved.

- Motor ①
- Flywheel and coupling ②
- Solenoid valve for draining ③
- Non-return valve ④
- Pressure switch ⑤
- Oil and water separator ⑥
- Flexible hoses ⑦

